

2024 MARINER'S UPDATE

First Coast Guard District:

ATLANTIC OCEAN - BOEM LEASE AREA OCS-A 0537

Fugro will be conducting geotechnical investigations from the Resilience survey vessel within a survey area in federal waters from approximately July 28, 2024, through approximately September 30, 2024, for 24 hours a day, 7 days a week, excluding periodic port calls. Geotechnical equipment on the Resilience includes C25 drill rig, Seacalf Cone Penetration Test (CPT) System, API drill pipe, WISON geotechnical sampling, SCPT, and P&S logging equipment.

The Fugro Resilience will have restricted or no maneuverability during the geotechnical investigations for extended periods of time and is requesting mariners operating in or transitioning the area to give a 0.5 NM passing clearance. Mariners, please transit the area with extreme caution. Fugro's Resilience will be monitoring VHF-FM CH 16 for any concerned traffic. Trevor Jones (Vessel Operations Manager for Bluepoint Wind) may also be contacted at 1-857-972-4328.

The Survey area will be bounded on four corners by coordinates:
NW: 40-03-39.4N, 072-53-32.7W; NE: 40-03-19.3N, 072-36-19.3W; SE: 39-53-58.6N, 072-36-38.9W;
SW: 39-54-18.6N, 072-53-49.9W. Mariners are urged to use extreme caution and transit the area at their slowest safe speed to create minimum wake after passing arrangements have been made.

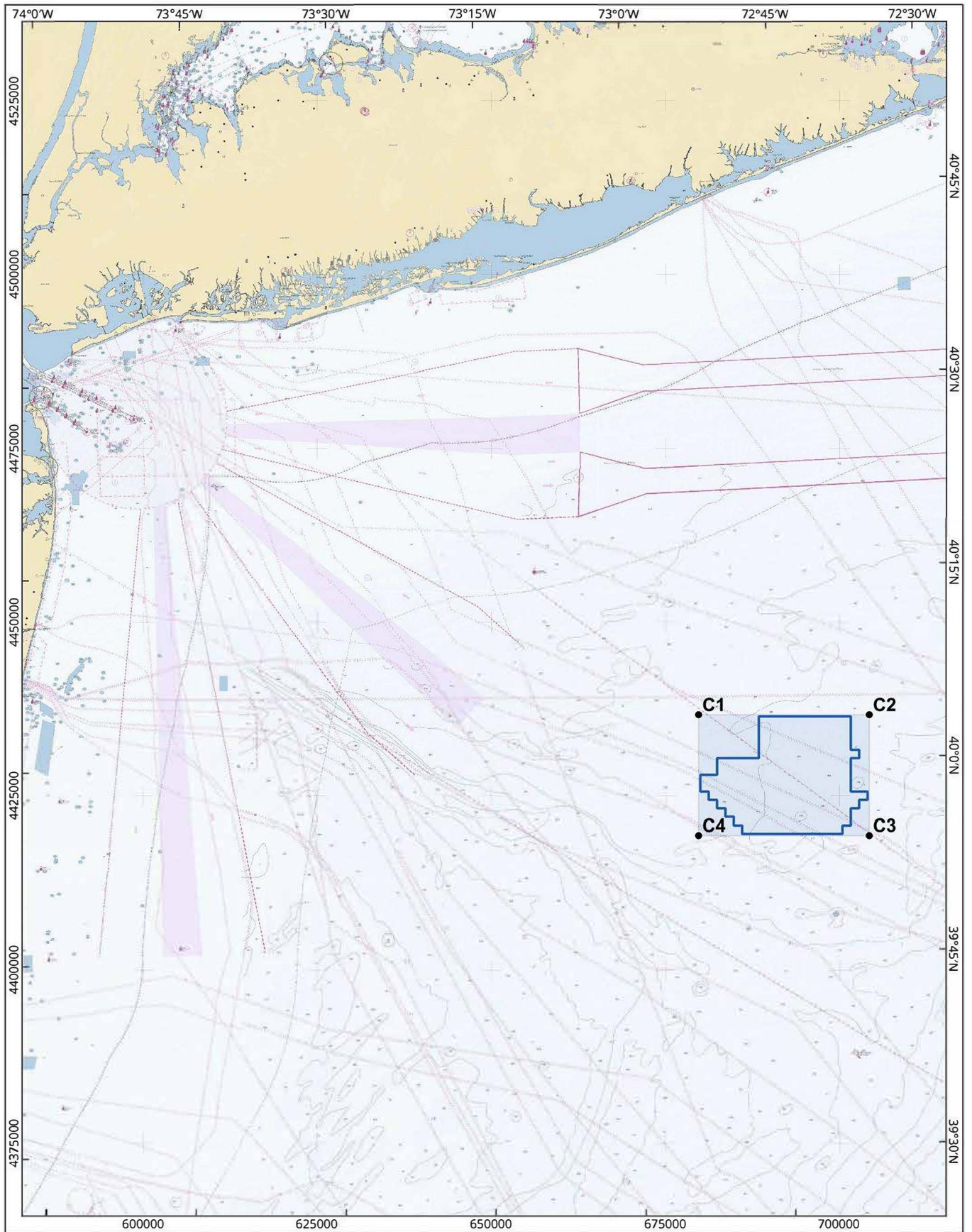
Fifth Coast Guard District:

NJ – SEACOAST - OFFSHORE SURVEY OPERATIONS

Fugro will be conducting geotechnical investigations from the Resilience survey vessel within a survey area in federal waters from approximately July 28, 2024, through approximately September 30, 2024, for 24 hours a day, 7 days a week, excluding periodic port calls. Geotechnical equipment on the Resilience includes C25 drill rig, Seacalf Cone Penetration Test (CPT) System, API drill pipe, WISON geotechnical sampling, SCPT, and P&S logging equipment.

The Fugro Resilience will have restricted or no maneuverability during the geotechnical investigations for extended periods of time and is requesting mariners operating in or transitioning the area to give a 0.5 NM passing clearance. Mariners, please transit the area with extreme caution. Fugro's Resilience will be monitoring VHF-FM CH 16 for any concerned traffic. Trevor Jones (Vessel Operations Manager for Bluepoint Wind) may also be contacted at 1-857-972-4328.

The Survey area will be bounded on four corners by coordinates:
NW: 072° 53' 32.7" W, 40° 03' 39.4" N
NE: 072° 36' 19.3" W, 40° 03' 19.3" N
SE: 072° 36' 38.9" W, 39° 53' 58.6" N
SW: 072° 53' 49.9" W, 39° 54' 18.6" N



Local Notice to Mariners - Bluepoint Wind Lease Area



Scale 1:500000

Legend

- Blue Point Wind Lease Area
- Survey Area - Lease
- Survey Area Corners - Lease

Corner	Longitude	Latitude
C1	72° 53' 32" W	40° 03' 39" N
C2	72° 36' 19" W	40° 03' 19" N
C3	72° 36' 38" W	39° 53' 58" N
C4	72° 53' 49" W	39° 54' 18" N



Origin	Document Control Number	Checked	Approved	Rev	Date
RCG	USBPW-BPW-GEO-GEO-NTM-0000	Amaya Shah	Trevor Jones	01	6/6/2024

EPSG:26918 // NAD83 / UTM zone 18N