

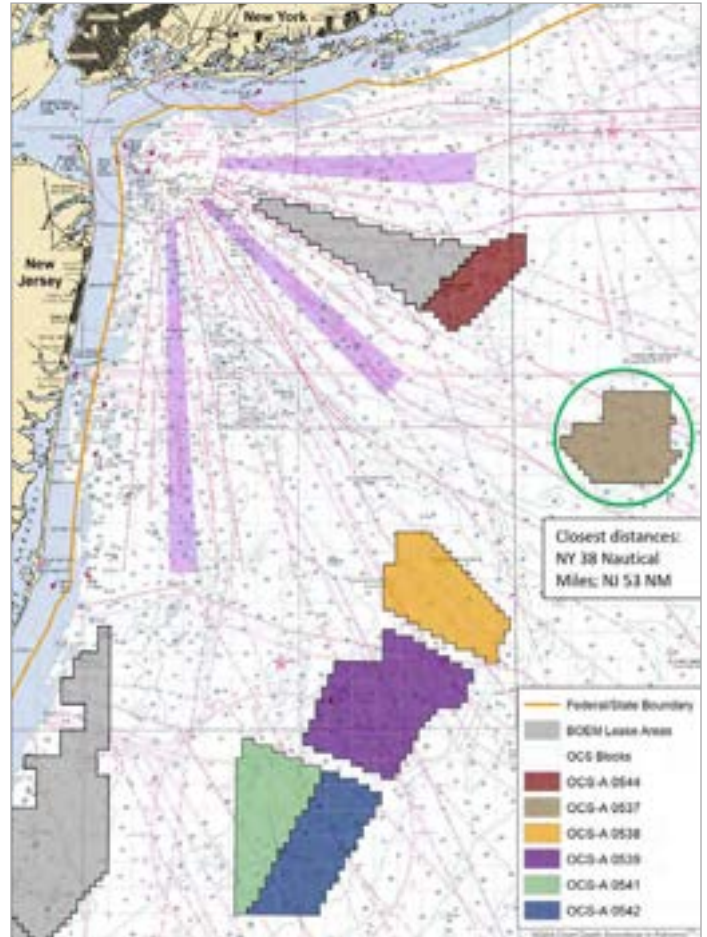
2024 SURVEY WORK

In 2023, Bluepoint Wind conducted geophysical and geotechnical surveys in our Lease Area and along potential Export Cable Corridors (ECC's). The 2023 survey scope included the entire lease area and the majority of potential ECC's. As a result of our progress Bluepoint Wind anticipates 2024 to have significantly less survey activity. We will continue to provide updates during and in advance of any work.

Survey activity, both geophysical and geotechnical, in NJ state waters is currently ongoing and is expected to conclude in early 2024.

Geophysical surveys are used to characterize the seafloor and sub-bottom features using acoustic and magnetic technologies that use sound to chart the seabed, sub-seabed, and magnetic anomalies. Geotechnical surveys will be used to determine the feasibility of building on a site through site investigation via physical sampling techniques. The collection of this information will assist Bluepoint Wind in understanding seabed topography, submerged obstructions, seabed and subsurface materials classifications (e.g., texture), and the locations of potential historic or archaeological resources.


- » Survey activities will be conducted in accordance with federal and state regulations and health & safety policies and procedures.
- » Survey activities and locations will be posted to the Local Notices to Mariners in U.S. Coast Guard Districts 1 and 5.
- » Vessels will have Protected Species Observers (PSOs) on-board during survey activities to identify protected species' presence and provide measures for the protection of marine wildlife.
- » Survey vessels will conduct work activities in accordance with the need to respectfully co-exist with fishermen and fisheries vessels, gear, and personnel.



BOEM Chart of Bluepoint Wind Lease (OSC-A 0537)

GET IN TOUCH:


Calvin Alexander
Sea Risk Solutions LLC Bluepoint
Wind Fisheries Liaison

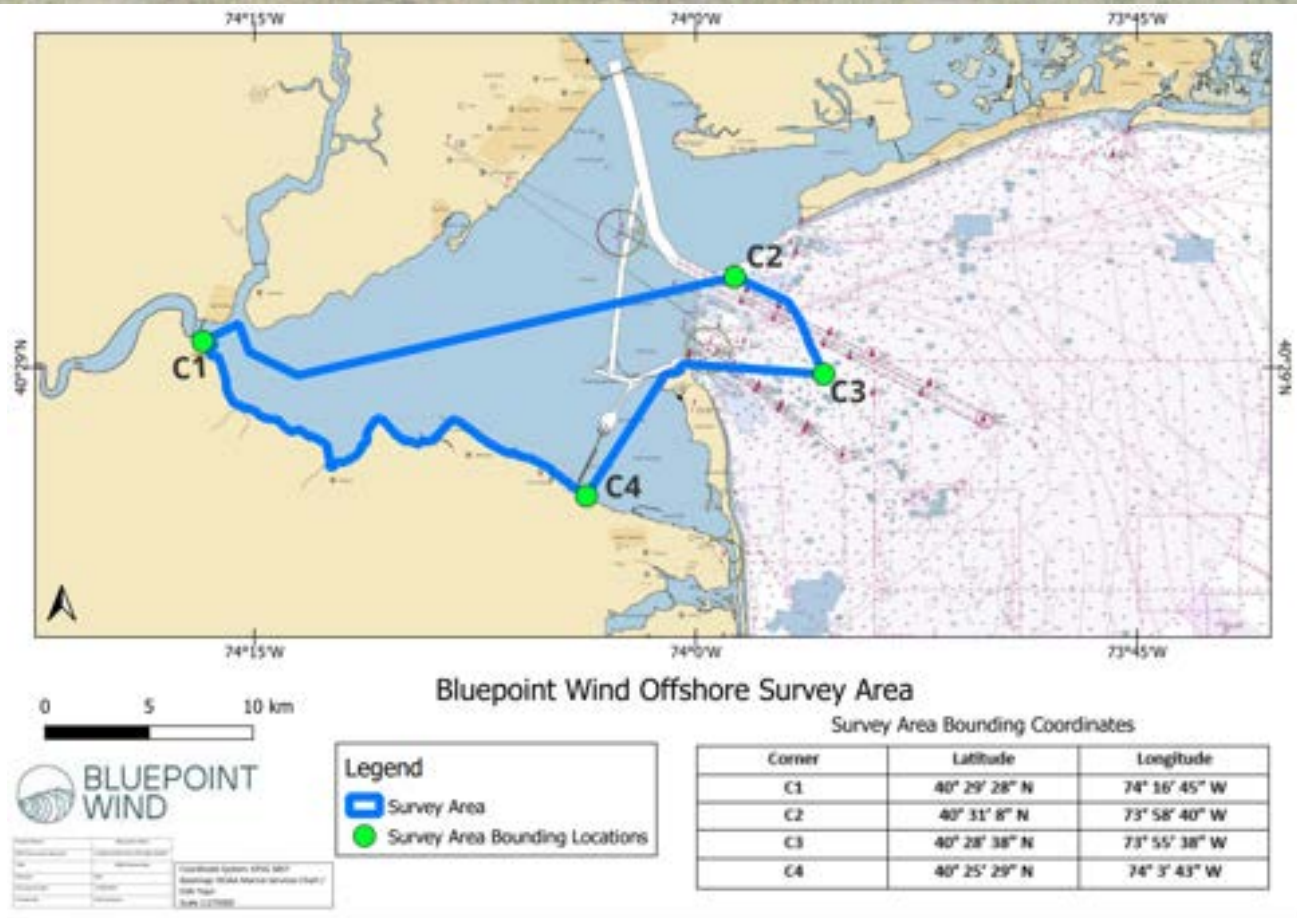
 fl@bluepointwind.com
 908.967.2080

Lisa Wood
Manager of External Affairs
Bluepoint Wind

 lisa.wood@bluepointwind.com
 551.966.5645

Diana Glinos
Fisheries Liaison
Bluepoint Wind

 diana.glinos@bluepointwind.com
 857.278.6552



Vessel Name: MV George
NJ Vessel Registration: NJ1574GW
Flag: USA [US]
Length: 24 feet
Activity Start Date: Early February
Area: Nearshore waters of New Jersey from approximately 3 NM from the shoreline to the NJ shore.
Operation: 7 days per week, 12 hours of daylight operation until survey completion



Vessel Name: RV William M
NJ Vessel Registration: NJ1968GZ
Flag: USA [US]
Length: 22 feet
Activity Start Date: Early February
Area: Nearshore waters of New Jersey from approximately 3 NM from the shoreline to the NJ shore.
Operation: 7 days per week, 12 hours of daylight operation until survey completion



Vessel Name: RV Henry Hudson
MMSI: 367541190
Call Sign: WDG4894
Flag: USA [US]
Length: 45 feet
Activity Start Date: December 22nd
Area: Nearshore waters of New Jersey from approximately 3 NM from the shoreline to the NJ shore.
Operation: 7 days per week, 12 hours of daylight operation until survey completion