

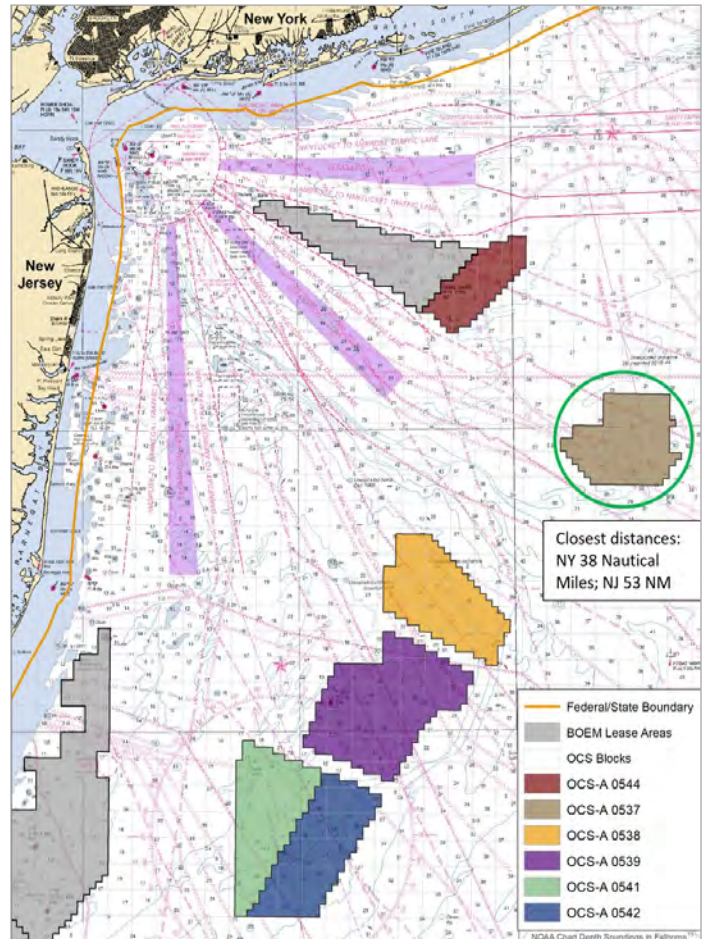
2023 SURVEY WORK

Multiple vessels will conduct geophysical surveys in the Bluepoint Wind Lease Area (OCS-A 0537) starting in March 2023. Vessels will be in the Bluepoint Wind Lease Area for reconnaissance activities starting on March 8, 2023 but will not start the geophysical survey until mid-month. These activities will continue through much of 2023 and include activities in areas under consideration for offshore export cable routes.

A geotechnical survey campaign will also be coordinated with the geophysical activities in the Summer of 2023. Bluepoint Wind will provide an update for geotechnical survey activities in advance of their start.

Geophysical surveys will be used to characterize the seafloor and sub-bottom features using acoustic and magnetic technologies that use sound to chart the seabed, sub-seabed, and magnetic anomalies. The collection of this information will assist Bluepoint Wind in understanding seabed topography, submerged obstructions, seabed and subsurface materials classifications (e.g., texture), and the locations of potential historic or archaeological resources.

- » Survey activities will be conducted in accordance with federal and state regulations and health & safety policies and procedures.
- » Survey activities and locations will be posted to the Local Notices to Mariners in U.S. Coast Guard Districts 1 and 5.
- » Vessels will have Protected Species Observers (PSOs) on-board during geophysical surveys to identify protected species' presence and provide measures for the protection of marine wildlife.
- » Survey vessels will conduct work activities in accordance with the need to respectfully co-exist with fishermen and fisheries vessels, gear, and personnel.

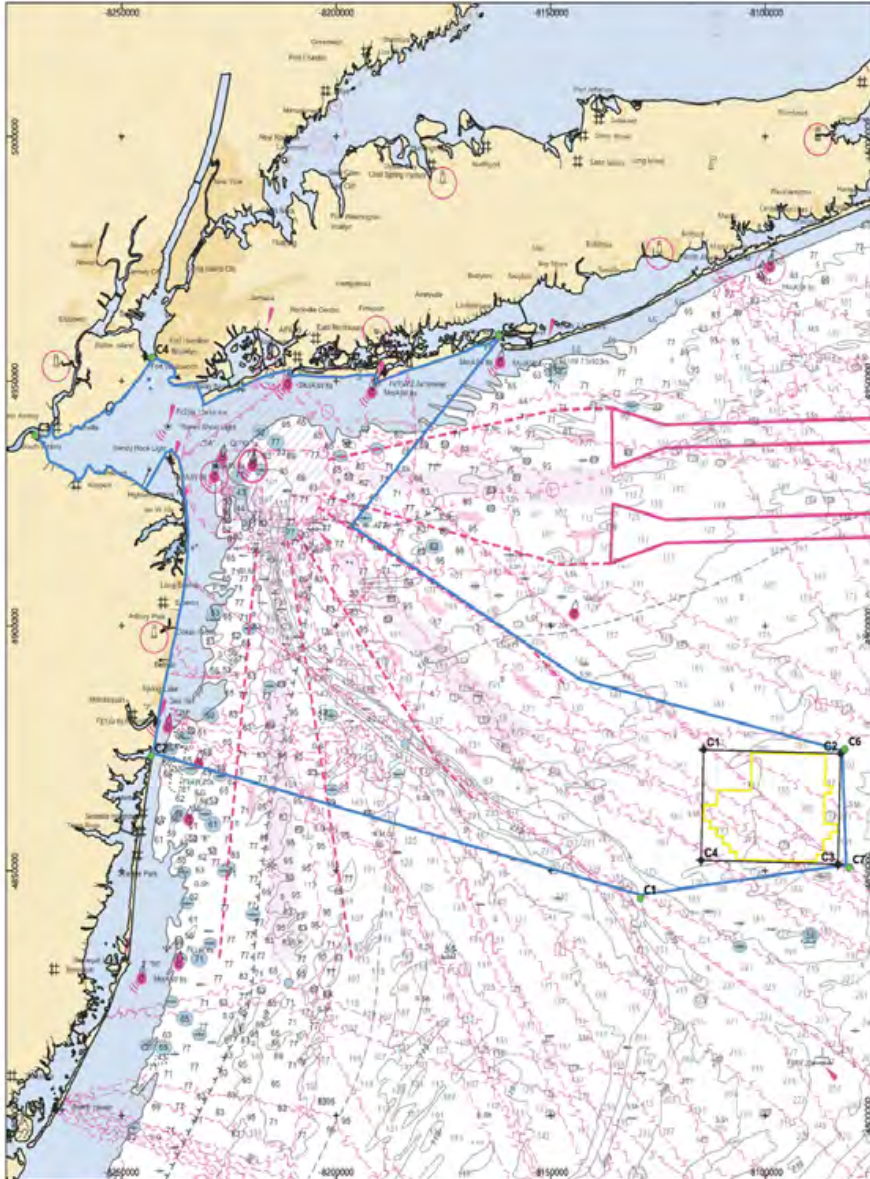


BOEM Chart of Bluepoint Wind Lease (OSC-A 0537)

GET IN TOUCH:

Calvin Alexander
Sea Risk Solutions LLC
Bluepoint Wind Fisheries Liaison
✉ fl@bluepointwind.com
☎ 908.967.2080

Lisa Wood
Stakeholder Manager
Bluepoint Wind
✉ lisa.wood@bluepointwind.com
☎ 551.966.5645



BLUEPOINT WIND OFFSHORE SURVEY AREA

EPSG CODE: 32218 COORDINATE SYSTEM: UTM ZONE 18 N - NAD83

Scale - 1: 700,000 at original 11" x 17" page size

Coordinate Reference - NAD83

LEGEND

- Survey Area Bounding Locations
- Lease Survey Area Corners
- Lease Survey Area
- Survey Area
- Bluepoint Wind Lease

SURVEY AREA BOUNDING COORDINATES (NAD83)		
CORNER	LATITUDE	LONGITUDE
1	39° 51' 07.4" N	73° 21' 28.1" W
2	39° 51' 07.4" N	73° 21' 28.1" W
3	39° 51' 07.4" N	73° 21' 28.1" W
4	39° 51' 07.4" N	73° 21' 28.1" W
5	39° 51' 07.4" N	73° 21' 28.1" W
6	39° 51' 07.4" N	73° 21' 28.1" W
7	39° 51' 07.4" N	73° 21' 28.1" W
8	39° 51' 07.4" N	73° 21' 28.1" W
9	39° 51' 07.4" N	73° 21' 28.1" W
10	39° 51' 07.4" N	73° 21' 28.1" W
11	39° 51' 07.4" N	73° 21' 28.1" W
12	39° 51' 07.4" N	73° 21' 28.1" W
13	39° 51' 07.4" N	73° 21' 28.1" W
14	39° 51' 07.4" N	73° 21' 28.1" W
15	39° 51' 07.4" N	73° 21' 28.1" W
16	39° 51' 07.4" N	73° 21' 28.1" W
17	39° 51' 07.4" N	73° 21' 28.1" W
18	39° 51' 07.4" N	73° 21' 28.1" W
19	39° 51' 07.4" N	73° 21' 28.1" W
20	39° 51' 07.4" N	73° 21' 28.1" W
21	39° 51' 07.4" N	73° 21' 28.1" W
22	39° 51' 07.4" N	73° 21' 28.1" W
23	39° 51' 07.4" N	73° 21' 28.1" W
24	39° 51' 07.4" N	73° 21' 28.1" W
25	39° 51' 07.4" N	73° 21' 28.1" W
26	39° 51' 07.4" N	73° 21' 28.1" W
27	39° 51' 07.4" N	73° 21' 28.1" W
28	39° 51' 07.4" N	73° 21' 28.1" W
29	39° 51' 07.4" N	73° 21' 28.1" W
30	39° 51' 07.4" N	73° 21' 28.1" W
31	39° 51' 07.4" N	73° 21' 28.1" W
32	39° 51' 07.4" N	73° 21' 28.1" W
33	39° 51' 07.4" N	73° 21' 28.1" W
34	39° 51' 07.4" N	73° 21' 28.1" W
35	39° 51' 07.4" N	73° 21' 28.1" W
36	39° 51' 07.4" N	73° 21' 28.1" W
37	39° 51' 07.4" N	73° 21' 28.1" W
38	39° 51' 07.4" N	73° 21' 28.1" W
39	39° 51' 07.4" N	73° 21' 28.1" W
40	39° 51' 07.4" N	73° 21' 28.1" W
41	39° 51' 07.4" N	73° 21' 28.1" W
42	39° 51' 07.4" N	73° 21' 28.1" W
43	39° 51' 07.4" N	73° 21' 28.1" W
44	39° 51' 07.4" N	73° 21' 28.1" W
45	39° 51' 07.4" N	73° 21' 28.1" W
46	39° 51' 07.4" N	73° 21' 28.1" W
47	39° 51' 07.4" N	73° 21' 28.1" W
48	39° 51' 07.4" N	73° 21' 28.1" W
49	39° 51' 07.4" N	73° 21' 28.1" W
50	39° 51' 07.4" N	73° 21' 28.1" W
51	39° 51' 07.4" N	73° 21' 28.1" W
52	39° 51' 07.4" N	73° 21' 28.1" W
53	39° 51' 07.4" N	73° 21' 28.1" W
54	39° 51' 07.4" N	73° 21' 28.1" W
55	39° 51' 07.4" N	73° 21' 28.1" W
56	39° 51' 07.4" N	73° 21' 28.1" W
57	39° 51' 07.4" N	73° 21' 28.1" W
58	39° 51' 07.4" N	73° 21' 28.1" W
59	39° 51' 07.4" N	73° 21' 28.1" W
60	39° 51' 07.4" N	73° 21' 28.1" W
61	39° 51' 07.4" N	73° 21' 28.1" W
62	39° 51' 07.4" N	73° 21' 28.1" W
63	39° 51' 07.4" N	73° 21' 28.1" W
64	39° 51' 07.4" N	73° 21' 28.1" W
65	39° 51' 07.4" N	73° 21' 28.1" W
66	39° 51' 07.4" N	73° 21' 28.1" W
67	39° 51' 07.4" N	73° 21' 28.1" W
68	39° 51' 07.4" N	73° 21' 28.1" W
69	39° 51' 07.4" N	73° 21' 28.1" W
70	39° 51' 07.4" N	73° 21' 28.1" W
71	39° 51' 07.4" N	73° 21' 28.1" W
72	39° 51' 07.4" N	73° 21' 28.1" W
73	39° 51' 07.4" N	73° 21' 28.1" W
74	39° 51' 07.4" N	73° 21' 28.1" W
75	39° 51' 07.4" N	73° 21' 28.1" W
76	39° 51' 07.4" N	73° 21' 28.1" W
77	39° 51' 07.4" N	73° 21' 28.1" W
78	39° 51' 07.4" N	73° 21' 28.1" W
79	39° 51' 07.4" N	73° 21' 28.1" W
80	39° 51' 07.4" N	73° 21' 28.1" W
81	39° 51' 07.4" N	73° 21' 28.1" W
82	39° 51' 07.4" N	73° 21' 28.1" W
83	39° 51' 07.4" N	73° 21' 28.1" W
84	39° 51' 07.4" N	73° 21' 28.1" W
85	39° 51' 07.4" N	73° 21' 28.1" W
86	39° 51' 07.4" N	73° 21' 28.1" W
87	39° 51' 07.4" N	73° 21' 28.1" W
88	39° 51' 07.4" N	73° 21' 28.1" W
89	39° 51' 07.4" N	73° 21' 28.1" W
90	39° 51' 07.4" N	73° 21' 28.1" W
91	39° 51' 07.4" N	73° 21' 28.1" W
92	39° 51' 07.4" N	73° 21' 28.1" W
93	39° 51' 07.4" N	73° 21' 28.1" W
94	39° 51' 07.4" N	73° 21' 28.1" W
95	39° 51' 07.4" N	73° 21' 28.1" W
96	39° 51' 07.4" N	73° 21' 28.1" W
97	39° 51' 07.4" N	73° 21' 28.1" W
98	39° 51' 07.4" N	73° 21' 28.1" W
99	39° 51' 07.4" N	73° 21' 28.1" W
100	39° 51' 07.4" N	73° 21' 28.1" W

LEASE AREA BOUNDING COORDINATES (NAD83)		
CORNER	LATITUDE	LONGITUDE
1	39° 51' 07.4" N	73° 21' 28.1" W
2	39° 51' 07.4" N	73° 21' 28.1" W
3	39° 51' 07.4" N	73° 21' 28.1" W
4	39° 51' 07.4" N	73° 21' 28.1" W
5	39° 51' 07.4" N	73° 21' 28.1" W
6	39° 51' 07.4" N	73° 21' 28.1" W
7	39° 51' 07.4" N	73° 21' 28.1" W
8	39° 51' 07.4" N	73° 21' 28.1" W
9	39° 51' 07.4" N	73° 21' 28.1" W
10	39° 51' 07.4" N	73° 21' 28.1" W
11	39° 51' 07.4" N	73° 21' 28.1" W
12	39° 51' 07.4" N	73° 21' 28.1" W
13	39° 51' 07.4" N	73° 21' 28.1" W
14	39° 51' 07.4" N	73° 21' 28.1" W
15	39° 51' 07.4" N	73° 21' 28.1" W
16	39° 51' 07.4" N	73° 21' 28.1" W
17	39° 51' 07.4" N	73° 21' 28.1" W
18	39° 51' 07.4" N	73° 21' 28.1" W
19	39° 51' 07.4" N	73° 21' 28.1" W
20	39° 51' 07.4" N	73° 21' 28.1" W
21	39° 51' 07.4" N	73° 21' 28.1" W
22	39° 51' 07.4" N	73° 21' 28.1" W
23	39° 51' 07.4" N	73° 21' 28.1" W
24	39° 51' 07.4" N	73° 21' 28.1" W
25	39° 51' 07.4" N	73° 21' 28.1" W
26	39° 51' 07.4" N	73° 21' 28.1" W
27	39° 51' 07.4" N	73° 21' 28.1" W
28	39° 51' 07.4" N	73° 21' 28.1" W
29	39° 51' 07.4" N	73° 21' 28.1" W
30	39° 51' 07.4" N	73° 21' 28.1" W
31	39° 51' 07.4" N	73° 21' 28.1" W
32	39° 51' 07.4" N	73° 21' 28.1" W
33	39° 51' 07.4" N	73° 21' 28.1" W
34	39° 51' 07.4" N	73° 21' 28.1" W
35	39° 51' 07.4" N	73° 21' 28.1" W
36	39° 51' 07.4" N	73° 21' 28.1" W
37	39° 51' 07.4" N	73° 21' 28.1" W
38	39° 51' 07.4" N	73° 21' 28.1" W
39	39° 51' 07.4" N	73° 21' 28.1" W
40	39° 51' 07.4" N	73° 21' 28.1" W
41	39° 51' 07.4" N	73° 21' 28.1" W
42	39° 51' 07.4" N	73° 21' 28.1" W
43	39° 51' 07.4" N	73° 21' 28.1" W
44	39° 51' 07.4" N	73° 21' 28.1" W
45	39° 51' 07.4" N	73° 21' 28.1" W
46	39° 51' 07.4" N	73° 21' 28.1" W
47	39° 51' 07.4" N	73° 21' 28.1" W
48	39° 51' 07.4" N	73° 21' 28.1" W
49	39° 51' 07.4" N	73° 21' 28.1" W
50	39° 51' 07.4" N	73° 21' 28.1" W
51	39° 51' 07.4" N	73° 21' 28.1" W
52	39° 51' 07.4" N	73° 21' 28.1" W
53	39° 51' 07.4" N	73° 21' 28.1" W
54	39° 51' 07.4" N	73° 21' 28.1" W
55	39° 51' 07.4" N	73° 21' 28.1" W
56	39° 51' 07.4" N	73° 21' 28.1" W
57	39° 51' 07.4" N	73° 21' 28.1" W
58	39° 51' 07.4" N	73° 21' 28.1" W
59	39° 51' 07.4" N	73° 21' 28.1" W
60	39° 51' 07.4" N	73° 21' 28.1" W
61	39° 51' 07.4" N	73° 21' 28.1" W
62	39° 51' 07.4" N	73° 21' 28.1" W
63	39° 51' 07.4" N	73° 21' 28.1" W
64	39° 51' 07.4" N	73° 21' 28.1" W
65	39° 51' 07.4" N	73° 21' 28.1" W
66	39° 51' 07.4" N	73° 21' 28.1" W
67	39° 51' 07.4" N	73° 21' 28.1" W
68	39° 51' 07.4" N	73° 21' 28.1" W
69	39° 51' 07.4" N	73° 21' 28.1" W
70	39° 51' 07.4" N	73° 21' 28.1" W
71	39° 51' 07.4" N	73° 21' 28.1" W
72	39° 51' 07.4" N	73° 21' 28.1" W
73	39° 51' 07.4" N	73° 21' 28.1" W
74	39° 51' 07.4" N	73° 21' 28.1" W
75	39° 51' 07.4" N	73° 21' 28.1" W
76	39° 51' 07.4" N	73° 21' 28.1" W
77	39° 51' 07.4" N	73° 21' 28.1" W
78	39° 51' 07.4" N	73° 21' 28.1" W
79	39° 51' 07.4" N	73° 21' 28.1" W
80	39° 51' 07.4" N	73° 21' 28.1" W
81	39° 51' 07.4" N	73° 21' 28.1" W
82	39° 51' 07.4" N	73° 21' 28.1" W
83	39° 51' 07.4" N	73° 21' 28.1" W
84	39° 51' 07.4" N	73° 21' 28.1" W
85	39° 51' 07.4" N	73° 21' 28.1" W
86	39° 51' 07.4" N	73° 21' 28.1" W
87	39° 51' 07.4" N	73° 21' 28.1" W
88	39° 51' 07.4" N	73° 21' 28.1" W
89	39° 51' 07.4" N	73° 21' 28.1" W
90	39° 51' 07.4" N	73° 21' 28.1" W
91	39° 51' 07.4" N	73° 21' 28.1" W
92	39° 51' 07.4" N	73° 21' 28.1" W
93	39° 51' 07.4" N	73° 21' 28.1" W
94	39° 51' 07.4" N	73° 21' 28.1" W
95	39° 51' 07.4" N	73° 21' 28.1" W
96	39° 51' 07.4" N	73° 21' 28.1" W
97	39° 51' 07.4" N	73° 21' 28.1" W
98	39° 51' 07.4" N	73° 21' 28.1" W
99	39° 51' 07.4" N	73° 21' 28.1" W
100	39° 51' 07.4" N	73° 21' 28.1" W



Vessel Name: Go Adventurer
MMSI: 368237180
Call Sign: WDM7780
Flag: USA [US]
Length: 185 feet
Activity Start Date: August 21st
Area: Coastal nearshore and Offshore Lease OCS-A 0537
Operation: 24 hours x 7 days



Vessel Name: Time and Tide
MMSI: 367585730
Call Sign: WDG9233
Flag: USA [US]
Length: 52.5 feet
Activity Start Date: Early April
Area: Coastal and nearshore NJ and NY
Operation: Daylight hours



Vessel Name: Fugro Explorer
MMSI: 357456000
Call Sign: 3FEV9
Flag: USA [US]
Length: 223.1 feet
Activity Start Date: September 15
Area: BPW Lease Area (OCS-A-0537)
Operation: Geotechnical Investigation