

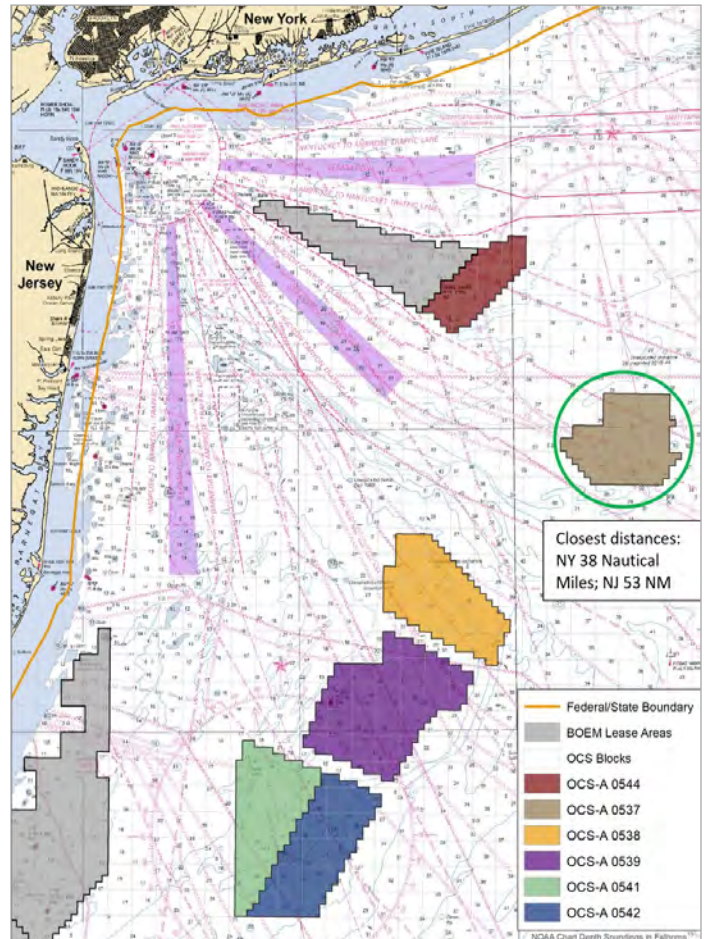
# 2024 SURVEY WORK

Multiple vessels have been conducting geophysical surveys in the Bluepoint Wind Lease Area (OCS-A 0537). Survey activity began in March 2023 and is expected to continue through early 2024. These campaigns also include activities in areas under consideration for offshore export cable routes.

A geotechnical survey campaign is also being coordinated with the geophysical activities. Geotechnical work began in the Summer of 2023 and is expected to continue through early 2024.

Geophysical surveys will be used to characterize the seafloor and sub-bottom features using acoustic and magnetic technologies that use sound to chart the seabed, sub-seabed, and magnetic anomalies. Geotechnical surveys will be used to determine the feasibility of building on a site through site investigation via physical sampling techniques. The collection of this information will assist Bluepoint Wind in understanding seabed topography, submerged obstructions, seabed and subsurface materials classifications (e.g., texture), and the locations of potential historic or archaeological resources.



- » Survey activities will be conducted in accordance with federal and state regulations and health & safety policies and procedures.
- » Survey activities and locations will be posted to the Local Notices to Mariners in U.S. Coast Guard Districts 1 and 5.
- » Vessels will have Protected Species Observers (PSOs) on-board during survey activities to identify protected species' presence and provide measures for the protection of marine wildlife.
- » Survey vessels will conduct work activities in accordance with the need to respectfully co-exist with fishermen and fisheries vessels, gear, and personnel.



BOEM Chart of Bluepoint Wind Lease (OSC-A 0537)

## GET IN TOUCH:

**Calvin Alexander**  
Sea Risk Solutions LLC Bluepoint  
Wind Fisheries Liaison

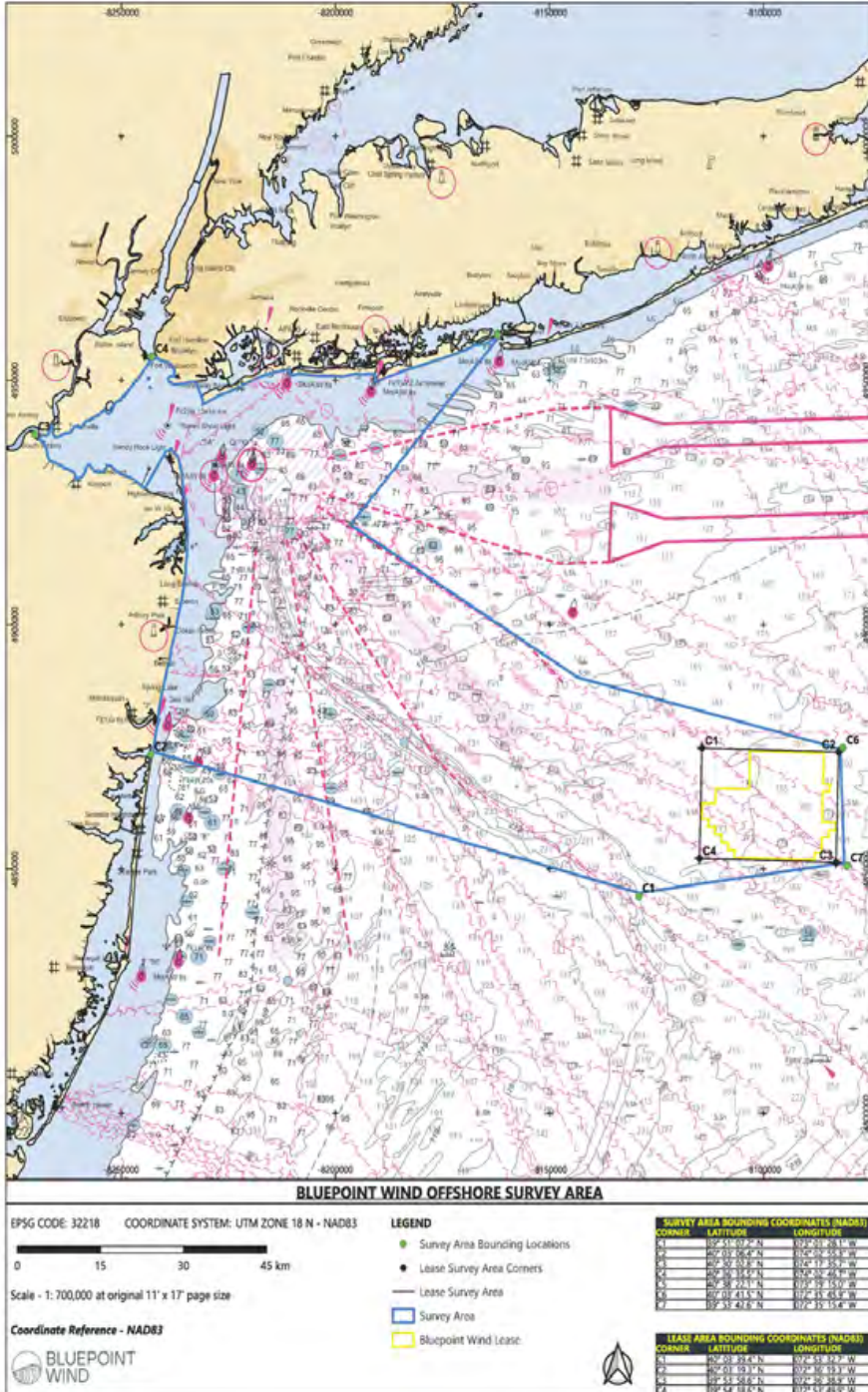
 [fl@bluepointwind.com](mailto:fl@bluepointwind.com)  
 908.967.2080

**Lisa Wood**  
Manager of External Affairs  
Bluepoint Wind

 [lisa.wood@bluepointwind.com](mailto:lisa.wood@bluepointwind.com)  
 551.966.5645

**Diana Glinos**  
Fisheries Liaison  
Bluepoint Wind

 [diana.glinos@bluepointwind.com](mailto:diana.glinos@bluepointwind.com)  
 857.278.6552



**Vessel Name:** RV Henry Hudson

**MMSI:** 367541190

**Call Sign:** WDG4894

**Flag:** USA [US]

**Length:** 45 feet

**Activity Start Date:** December 22nd

**Area:** Nearshore waters of New Jersey from approximately 3 NM from the shoreline to the NJ shore.

**Operation:** 7 days per week, 12 hours of daylight operation until survey completion