

# MARINER'S UPDATE

## First Coast Guard District:

### **ATLANTIC OCEAN - WIND LEASE AREA OCS-A 0537**

TerraSond will be conducting geophysical survey activities within offshore waters including Lease Area OCS-A-0537 and nearshore waters of NY and NJ, from March 1 through September 30, 2023, 24 hours a day, seven days a week. Equipment on scene will be the GO Adventurer survey vessel, utilizing side scan sonar (SSS), multibeam bathymetry echo sounder (MBES), cesium vapor magnetometer (MAG), parametric sub bottom profiler (SBP) and ultrashort base line (USBL) acoustic transceiver, and marine multi-tip sparker seismic system (MCS). In addition, the vessel will be towing an ultra-high-resolution streamer. GO Adventurer will have restricted maneuverability during survey operations when towing equipment. Mariners, please transit the area with extreme caution and transit at slow speed to minimize wake when transiting the area. GO Adventurer will be monitoring VHF-FM CH 16 for any concerned traffic. Trevor Jones (Vessel Operations Manager for Bluepoint Wind) may also be contacted at 1-857-972-4328. LNM 26/23

### **ATLANTIC OCEAN -NY-NJ COAST**

Blue Point Wind will be conducting geophysical survey activities from the GERRY BORDELON survey vessel within an offshore and nearshore survey area, between lease area OCS-A 0537 and nearshore waters of New Jersey and New York, from April 4 to June 30, 2023, the GERRY BORDELON will operate 24 hours a day, seven days a week. Equipment on scene will be monitoring VHF-FM CH 16 and will be operating with Sidescan sonar (SSS), multibeam bathymetry echo sounder (MBES), cesium vapor magnetometer (MAG), parametric sub-bottom profiler (SBP), and ultra-short base line (USBL) acoustic transceiver. Vessels will have restricted maneuverability during survey operations when towing equipment. Mariners, please transit the area with extreme caution and transit at slow speed to minimize wake when transiting the area. LNM 26/23

### **ATLANTIC OCEAN -NY-NJ COAST**

Bluepoint Wind will be conducting geophysical survey activities from the TIME & TIDE survey vessel within an offshore and nearshore survey area, between lease area OCS-A0537 and nearshore waters of New Jersey and New York, from April 1 to November 30, 2023, the TIME & TIDE will operate during daylight hours, only. Equipment on scene will be monitoring VHF-FM CH 16 and will be operating with Sidescan sonar (SSS), multibeam bathymetry echo sounder (MBES), cesium vapor magnetometer (MAG), parametric sub-bottom profiler (SBP), single channel seismic boomer (SUHRS) and ultra-short base line (USBL) acoustic transceiver. Vessels will have restricted maneuverability during survey operations when towing equipment. Mariners, please transit the area with extreme caution and transit at slow speed to minimize wake when transiting the area. LNM 11/23

# MARINER'S UPDATE

## First Coast Guard District:

### **ATLANTIC OCEAN-NJ COAST**

Fugro will be conducting geotechnical investigations from the Explorer within offshore waters, specifically within Lease Area OCS-A-0537 from approximately July 7th, 2023 through approximately November 7th, 2023, 24 hours a day, 7 days a week. Equipment on the Explorer includes geotechnical drilling equipment including C25 drill rig, API drill pipe, WISON geotechnical sampling equipment and P&S logging equipment. Explorer will have restricted to no maneuverability during survey operations for extended periods of time and is requesting mariners operating in or transiting in the area to give a 0.5 NM passing clearance. Mariners, please transit the area with extreme caution. Explorer will be monitoring VHF-FM CH 16 for any concerned traffic. Trevor Jones (Vessel Operations Manager for Bluepoint Wind) may also be contacted at 1-857-972-4328

### **ATLANTIC OCEAN -NY-NJ COAST**

TerraSond will be conducting geotechnical investigations from the Almar 31 survey vessel with support from the Carta vessel within a survey area in state nearshore waters, from approximately August 28th, 2023 through approximately November 30th, 12 hours a day during daylight, 7 days a week. Equipment on Almar 31 includes geotechnical drilling equipment including a 3m vibra-core unit, Ocean Instruments RIC 5500 CPT unit. Almar 31 will have restricted to no maneuverability during survey operations for extended periods of time and is requesting mariners operating in or transiting in the area to give a 0.5 NM passing clearance. Mariners, please transit the area with extreme caution. Both Almar 31 and Carta will be monitoring VHF-FM CH 16 for any concerned traffic. Trevor Jones (Vessel Operations Manager for Bluepoint Wind) may also be contacted at 1-857-972-4328.

## Fifth Coast Guard District:

### **NY – NJ – SEACOAST – OFFSHORE SURVEY OPERATIONS**

TerraSond will be conducting geophysical survey activities from the GO Adventurer survey vessel within the Bluepoint Wind Lease Area (OCS-A 0537).

The survey area will be bounded by below coordinates:

39° 51' 07.2" N, 073° 01' 28.1" W;  
40° 03' 06.4" N, 074° 02' 55.3" W,  
40° 30' 02.8" N, 074° 17' 35.7" W,  
40° 36' 35.5" N, 074° 02' 46.7" W,  
40° 38' 22.1" N, 073° 19' 15.0" W;  
40° 03' 41.5" N, 072° 35' 45.9" W,  
39° 53' 42.6" N, 072° 35' 15.4" W.

Sidescan sonar (SSS), multibeam bathymetry echo sounder (MBES), cesium vapor magnetometer (MAG), parametric sub-bottom profiler (SBP), and ultrashort base line (USBL) acoustic transceiver will be used starting on March 1, 2023, until approximately September 30, 2023 and will be conducted 7 days per week, 24 hours per day until survey completion with periodic port calls. GO Adventurer will monitor VHF-FM Ch 16. For more information, Trevor Jones may also be contacted at 1-857-972-4328.

# MARINER'S UPDATE

## **Fifth Coast Guard District:**

### **NY – NJ – SEACOAST – OFFSHORE SURVEY OPERATIONS**

TerraSond will be conducting geophysical survey activities from the Gerry Bordelon survey vessels within the Bluepoint Wind Lease Area (OCS-A 0537).

The survey area will be bounded by below coordinates:

39° 51' 07.2" N, 073° 01' 28.1" W;  
40° 03' 06.4" N, 074° 02' 55.3" W,  
40° 30' 02.8" N, 074° 17' 35.7" W,  
40° 36' 35.5" N, 074° 02' 46.7" W,  
40° 38' 22.1" N, 073° 19' 15.0" W;  
40° 03' 41.5" N, 072° 35' 45.9" W,  
39° 53' 42.6" N, 072° 35' 15.4" W.

Sidescan sonar (SSS), multibeam bathymetry echo sounder (MBES), cesium vapor magnetometer (MAG), parametric sub-bottom profiler (SBP), and ultrashort base line (USBL) acoustic transceiver will be used starting on April 4, 2023, until approximately September 30, 2023 and will be conducted 7 days per week, 24 hours per day for Gerry Bordelon, until survey completion with periodic port calls. Gerry Bordelon and Time & Tide will monitor VHF-FM Ch 16. Vessels will have restricted maneuverability during survey operations when towing equipment. Mariners, please transit the area with extreme caution and transit at slow speed to minimize wake when transiting the area. For more information, Trevor Jones may also be contacted at 1-857-972-4328.

Chart 13003 LNM 11/23

### **NY – NJ – SEACOAST – OFFSHORE SURVEY OPERATIONS**

EGS will be conducting geophysical survey activities from the Time & Tide survey vessels within NJ and NY waters and federal waters.

The survey area will be bounded by below coordinates:

39° 51' 07.2" N, 073° 01' 28.1" W;  
40° 03' 06.4" N, 074° 02' 55.3" W,  
40° 30' 02.8" N, 074° 17' 35.7" W,  
40° 36' 35.5" N, 074° 02' 46.7" W,  
40° 38' 22.1" N, 073° 19' 15.0" W;  
40° 03' 41.5" N, 072° 35' 45.9" W,  
39° 53' 42.6" N, 072° 35' 15.4" W.

Sidescan sonar (SSS), multibeam bathymetry echo sounder (MBES), cesium vapor magnetometer (MAG), parametric sub-bottom profiler (SBP), single channel seismic boomer (S-UHRS) and ultrashort base line (USBL) acoustic transceiver will be used starting on April 1, 2023, until approximately September 30, 2023 and will be conducted 7 days per week during daylight hours, until survey completion with periodic port calls. Time & Tide will monitor VHF-FM Ch 16. Vessels will have restricted maneuverability during survey operations when towing equipment. Mariners, please transit the area with extreme caution and transit at slow speed to minimize wake when transiting the area. For more information, Trevor Jones may also be contacted at 1-857-972-4328.

Chart 13003 LNM 11/23

# MARINER'S UPDATE

## Fifth Coast Guard District:

### **NY - NJ - SEACOAST - OFFSHORE SURVEY OPERATIONS**

Fugro will be conducting geotechnical investigations from Regulus and/or Explorer within the Bluepoint Wind Lease Area (OCS-A 0537).

The survey area will be bounded by the following coordinates:

40° 03' 39.4" N, 072° 53' 32.7" W  
40° 03' 19.3" N, 072° 36' 19.3" W  
39° 53' 58.6" N, 072° 36' 38.9" W  
39° 54' 18.6" N, 072° 53' 49.9" W

Equipment on the vessel(s) include C25 drill rig, API drill pipe, WISON geotechnical sampling equipment and P&S logging equipment. Survey operations start approximately on July 7, 2023, until approximately August 31, 2023 and will be conducted 7 days per week, 24 hours per day until survey completion with periodic port calls. Regulus and/or Explorer will monitor VHF-FM Ch 16. The vessel(s) will have restricted or no maneuverability during survey operations for extended periods of time and is requesting mariners operating in or transiting the area to give a 0.5 NM passing clearance. Mariners, please transit the area with extreme caution. For more information, Trevor Jones may also be contacted at 1-857-972-4328. Chart 13003 LNM 25/23

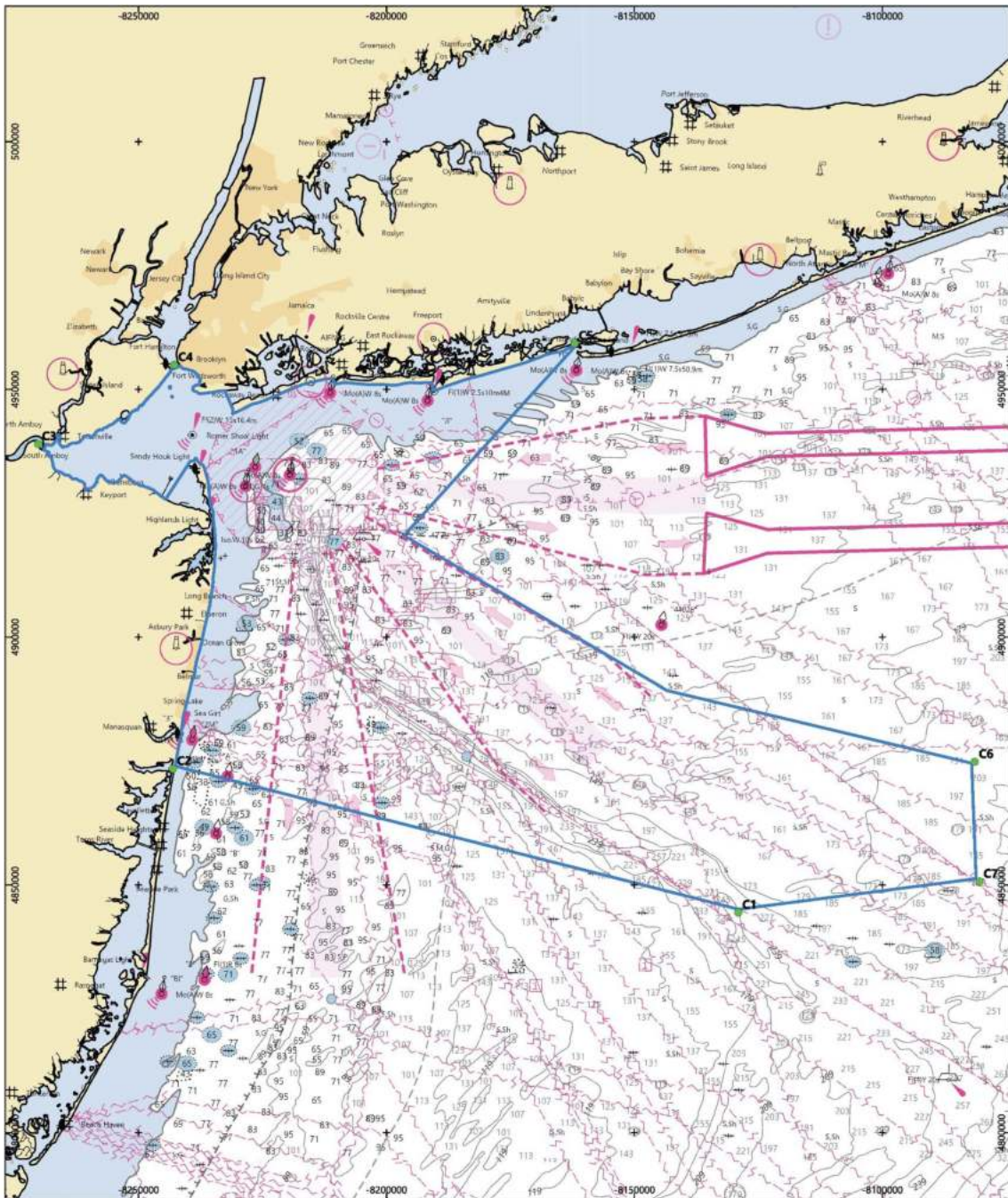
### **NY - NJ - SEACOAST - OFFSHORE SURVEY OPERATIONS**

TerraSond will be conducting geotechnical investigations from the Almar 31 survey vessel with support from Carta within a survey area in state nearshore waters bounded by the NY and NJ coast and the following coordinates:

40° 02' 36.7" N, 73° 58' 51.8" W  
40° 03' 06.4" N, 74° 02' 55.3" W  
40° 30' 02.7" N, 74° 17' 35.7" W  
40° 36' 35.5" N, 74° 02' 46.7" W  
40° 31' 54.1" N, 73° 39' 26.9" W  
40° 21' 06.3" N, 73° 54' 22.3" W

Equipment on Almar 31 includes a 3m vibra-core unit, Ocean Instruments RIC 5500 CPT unit. Survey operations start approximately on November 30th, 2023, until approximately September 30th, 2023 and will be conducted 7 days per week, 12 hours per day during daylight until survey completion with periodic port calls. Both Almar 31 and Carta will monitor VHF-FM Ch 16. Almar 31 will have restricted to no maneuverability during survey operations for extended periods of time and is requesting mariners operating in or transiting the area to give a 0.5 NM passing clearance. Mariners, please transit the area with extreme caution. For more information, Trevor Jones (Vessel Operations Manager for Bluepoint Wind) may also be contacted at 1-857-972-4328.

# MARINER'S UPDATE



**LOCAL NOTICE TO MARINERS - BLUEPOINT WIND OFFSHORE SURVEY AREA**

EPSG CODE: 32218

COORDINATE SYSTEM: UTM ZONE 18 N - NAD83

**LEGEND**

- Survey Area Bounding Locations
- Survey Area



Scale - 1: 700,000 at original 11" x 17" page size

Coordinate Reference - NAD83



**SURVEY AREA BOUNDING COORDINATES (NAD83)**

CORNER	LATITUDE	LONGITUDE
C1	39° 51' 07.2" N	073° 01' 28.1" W
C2	40° 03' 06.4" N	074° 02' 55.3" W
C3	40° 30' 02.8" N	074° 17' 35.7" W
C4	40° 36' 35.5" N	074° 02' 46.7" W
C5	40° 38' 22.1" N	073° 19' 15.0" W
C6	40° 03' 41.5" N	072° 35' 45.9" W
C7	39° 53' 42.6" N	072° 35' 15.4" W