

MARINER'S UPDATE

First Coast Guard District:

ONGOING WORK- ATLANTIC OCEAN - NEW JERSEY

Alpine will be conducting geophysical investigations from the Henry Hudson survey vessel within a survey area in state waters, from approximately December 22, 2023, through approximately January 31, 2023, for 12 hours a day during daylight, 7 days a week, in the following positions: 40-30.2N, 074-16.41W; 40-34.34N, 074-34.43W; 40-30.19N, 074-0.8W; 40-25.28N, 074-3.43W Equipment on the Henry Hudson includes sidescan sonar (SSS), multibeam bathymetry echo sounder (MBES), single beam bathymetry echo sounder (SBES), gradiometer (MAG), parametric sub-bottom profiler (SBP), single-channel seismic sparker and streamer, and ultra-short base line (USBL) acoustic transceiver. Henry Hudson will have restricted maneuverability during survey operations when towing equipment and is requesting mariners transit with extreme caution and at a slow speed to minimize wake when transiting the area. Henry Hudson will be monitoring VHF-FM CH 16 for any concerned traffic. Trevor Jones (Vessel Operations Manager for Bluepoint Wind) may also be contacted at 1-857-972-4328. LNM 50/23

ONGOING WORK- ATLANTIC OCEAN-NEW YORK-NEW JERSEY COAST-Update 12/11/2023

TerraSond/TDI Brooks will be conducting geotechnical investigations from the R/V BROOKS MCCALL survey vessel within a survey area in state and offshore waters, from approximately September 17, 2023, through approximately January 31, 2024, 24 hours a day, 7 days a week. Equipment on the vessel includes geotechnical drilling equipment including a 6-meter vibra-core unit, ROSON 100 CPT unit, and Fielax thermal Resistivity test system. Brooks McCall will have restricted to no maneuverability during survey operations for extended periods of time and is requesting mariners operating in or transiting in the area to give a 0.5 NM passing clearance. Mariners, please transit the area with extreme caution. R/V BROOKS MCCALL will be monitoring VHF-FM CH 16 for any concerned traffic. Trevor Jones (Vessel Operations Manager for Bluepoint Wind) may also be contacted at 1-857-972-4328. LNM 32/23

COMPLETED WORK- ATLANTIC OCEAN - WIND LEASE AREA OCS-A-05377

TerraSond will be conducting geophysical survey activities within offshore waters including Lease Area OCS-A-0537 and nearshore waters of NY and NJ, from March 1 through September 30, 2023, 24 hours a day, seven days a week. Equipment on scene will be the GO Adventurer survey vessel, utilizing side scan sonar (SSS), multibeam bathymetry echo sounder (MBES), cesium vapor magnetometer (MAG), parametric sub bottom profiler (SBP) and ultrashort base line (USBL) acoustic transceiver, and marine multi-tip sparker seismic system (MCS). In addition, the vessel will be towing an ultra-high-resolution streamer. GO Adventurer will have restricted maneuverability during survey operations when towing equipment. Mariners, please transit the area with extreme caution and transit at slow speed to minimize wake when transiting the area. GO Adventurer will be monitoring VHF-FM CH 16 for any concerned traffic. Trevor Jones (Vessel Operations Manager for Bluepoint Wind) may also be contacted at 1-857-972-4328. LNM 26/23

MARINER'S UPDATE

First Coast Guard District:

COMPLETED WORK- ATLANTIC OCEAN -NY-NJ COAST

Blue Point Wind will be conducting geophysical survey activities from the GERRY BORDELON survey vessel within an offshore and nearshore survey area, between lease area OCS-A 0537 and nearshore waters of New Jersey and New York, from April 4 to June 30, 2023, the GERRY BORDELON will operate 24 hours a day, seven days a week. Equipment on scene will be monitoring VHF-FM CH 16 and will be operating with Sidescan sonar (SSS), multibeam bathymetry echo sounder (MBES), cesium vapor magnetometer (MAG), parametric sub-bottom profiler (SBP), and ultra-short base line (USBL) acoustic transceiver. Vessels will have restricted maneuverability during survey operations when towing equipment. Mariners, please transit the area with extreme caution and transit at slow speed to minimize wake when transiting the area. LNM 26/23

COMPLETED WORK- ATLANTIC OCEAN -NY-NJ COAST

Bluepoint Wind will be conducting geophysical survey activities from the TIME & TIDE survey vessel within an offshore and nearshore survey area, between lease area OCS-A 0537 and nearshore waters of New Jersey and New York, from April 1 to September 30, 2023, the TIME & TIDE will operate during daylight hours, only. Equipment on scene will be monitoring VHF-FM CH 16 and will be operating with Sidescan sonar (SSS), multibeam bathymetry echo sounder (MBES), cesium vapor magnetometer (MAG), parametric sub-bottom profiler (SBP), single channel seismic boomer (SUHRS) and ultra-short base line (USBL) acoustic transceiver. Vessels will have restricted maneuverability during survey operations when towing equipment. Mariners, please transit the area with extreme caution and transit at slow speed to minimize wake when transiting the area. LNM 11/23

COMPLETED WORK- ATLANTIC OCEAN-NJ COAST

Fugro will be conducting geotechnical investigations from the Regulus and/or Explorer vessel(s) within offshore waters, Specifically within Lease Area OCS-A-0537, from approximately July 7th, 2023, through August 31st, 2023, 24 hours a day, 7 days a week. Equipment on the vessel(s) includes geotechnical drilling equipment including C25 drill rig, API drill pipe, WISON geotechnical sampling equipment and P&S logging equipment. Regulus and/or Explorer will have restricted to no maneuverability during survey operations for extended periods of time and is requesting mariners operating in or transiting in the area to give a 0.5 NM Passing clearance. Mariners, Please transit the area with extreme caution. Regulus and/or Explorer will be monitoring VHF-FM CH 16 for any concerned traffic. Trevor Jones (Vessel Operations Manager or Bluepoint Wind) may also be contacted at 1-857-972-4328.

MARINER'S UPDATE

First Coast Guard District:

COMPLETED- ATLANTIC OCEAN -NY-NJ COAST

TerraSond will be conducting geotechnical investigations from the Yeti survey vessel with support from the Carta vessel within a survey area in state nearshore waters, from approximately August 28th, 2023 through approximately September 30th, 2023, 12 hours a day during daylight, 7 days a week. Equipment on Yeti includes geotechnical drilling equipment including a 3m vibra-core unit, Ocean Instruments RIC 5500 CPT unit. Yeti will have restricted to no maneuverability during survey operations for extended periods of time and is requesting mariners operating in or transiting in the area to give a 0.5 NM passing clearance. Mariners, please transit the area with extreme caution. Both Yeti and Carta will be monitoring VHF-FM CH 16 for any concerned traffic. Trevor Jones (Vessel Operations Manager for Bluepoint Wind) may also be contacted at 1-857-972-4328.

Fifth Coast Guard District:

ONGOING WORK- **NY – NJ – RARITAN BAY – SURVEY OPERATIONS******

Alpine will be conducting geophysical investigations from the Henry Hudson survey vessel within a survey area in state waters, from approximately December 22, 2023, through approximately January 31, 2023, for 12 hours a day during daylight, 7 days a week. Equipment on the Henry Hudson includes sidescan sonar (SSS), multibeam bathymetry echo sounder (MBES), single beam bathymetry echo sounder (SBES), gradiometer (MAG), parametric subbottom profiler (SBP), single-channel seismic sparker and streamer, and ultra-short base line (USBL) acoustic transceiver. Henry Hudson will have restricted maneuverability during survey operations when towing equipment and is requesting mariners transit with extreme caution and at a slow speed to minimize wake when transiting the area. Henry Hudson will be monitoring VHF-FM CH 16 for any concerned traffic. Trevor Jones (Vessel Operations Manager for Bluepoint Wind) may also be contacted at 1-857-972-4328. The survey will be conducted in nearshore waters within the following bounding coordinates:

40° 30' 2" N, 74° 16' 41" W; 40° 34' 34" N, 74° 34' 43" W 40° 30' 19" N, 74° 0' 8" W; 40° 25' 28" N, 74° 3' 43" W.

MARINER'S UPDATE

Fifth Coast Guard District:

ONGOING WORK- **NY – NJ – SEACOAST – OFFSHORE SURVEY OPERATIONS******

TerraSond/TDI Brooks will be conducting geotechnical investigations from R/V Brooks McCall within a survey area in state and offshore waters bounded by the following coordinates:

39° 51' 07.2" N, 073° 01' 28.1" W 40° 03' 06.4" N, 074° 02' 55.3" W
40° 30' 02.8" N, 074° 17' 35.7" W 40° 36' 35.5" N, 074° 02' 46.7" W
40° 38' 22.1" N, 073° 19' 15.0" W 40° 03' 41.5" N, 072° 35' 45.9" W
39° 53' 42.6" N, 072° 35' 15.4" W

TerraSond/TDI Brooks will be conducting geotechnical investigations from the R/V Brooks McCall survey vessel within a survey area in state and offshore waters, from approximately August 18, 2023 until January 31, 2024, 24 hours a day, 7 days a week. The geotechnical equipment on the vessel will consist of a 6-meter vibra-core unit. The R/V Brooks McCall survey vessel will have restricted to no maneuverability during survey operations for extended periods of time and is requesting mariners operating in or transiting in the area to give a 0.5 NM passing clearance. Mariners, please transit the area with extreme caution. R/V Brooks McCall survey vessel will be monitoring VHF-FM CH 16 for any concerned traffic. Trevor Jones (Vessel Operations Manager for Bluepoint Wind) may also be contacted at 1-857-972-4328. Chart 13003 LNM 32/23

COMPLETED- NY – NJ – SEACOAST – OFFSHORE SURVEY OPERATIONS

TerraSond will be conducting geophysical survey activities from the GO Adventurer survey vessel within the Bluepoint Wind Lease Area (OCS-A 0537). The survey area will be bounded by below coordinates:

39° 51' 07.2" N, 073° 01' 28.1" W;
40° 03' 06.4" N, 074° 02' 55.3" W,
40° 30' 02.8" N, 074° 17' 35.7" W,
40° 36' 35.5" N, 074° 02' 46.7" W,
40° 38' 22.1" N, 073° 19' 15.0" W;
40° 03' 41.5" N, 072° 35' 45.9" W,
39° 53' 42.6" N, 072° 35' 15.4" W.

Sidescan sonar (SSS), multibeam bathymetry echo sounder (MBES), cesium vapor magnetometer (MAG), parametric sub-bottom profiler (SBP), and ultrashort base line (USBL) acoustic transceiver will be used starting on March 1, 2023, until approximately September 30, 2023 and will be conducted 7 days per week, 24 hours per day until survey completion with periodic port calls. GO Adventurer will monitor VHF-FM Ch 16. For more information, Trevor Jones may also be contacted at 1-857-972-4328. Chart 13003 LNM 07/23

MARINER'S UPDATE

Fifth Coast Guard District:

COMPLETED- NY – NJ – SEACOAST – OFFSHORE SURVEY OPERATIONS

TerraSond will be conducting geophysical survey activities from the Gerry Bordelon survey vessels within the Bluepoint Wind Lease Area (OCS-A 0537).

The survey area will be bounded by below coordinates:

39° 51' 07.2" N, 073° 01' 28.1" W;
40° 03' 06.4" N, 074° 02' 55.3" W,
40° 30' 02.8" N, 074° 17' 35.7" W,
40° 36' 35.5" N, 074° 02' 46.7" W,
40° 38' 22.1" N, 073° 19' 15.0" W;
40° 03' 41.5" N, 072° 35' 45.9" W,
39° 53' 42.6" N, 072° 35' 15.4" W.

Sidescan sonar (SSS), multibeam bathymetry echo sounder (MBES), cesium vapor magnetometer (MAG), parametric sub-bottom profiler (SBP), and ultrashort base line (USBL) acoustic transceiver will be used starting on April 4, 2023, until approximately September 30, 2023 and will be conducted 7 days per week, 24 hours per day for Gerry Bordelon, until survey completion with periodic port calls. Gerry Bordelon and Time & Tide will monitor VHF-FM Ch 16. Vessels will have restricted maneuverability during survey operations when towing equipment. Mariners, please transit the area with extreme caution and transit at slow speed to minimize wake when transiting the area. For more information, Trevor Jones may also be contacted at 1-857-972-4328.

Chart 13003 LNM 11/23

COMPLETED- NY – NJ – SEACOAST – OFFSHORE SURVEY OPERATIONS

EGS will be conducting geophysical survey activities from the Time & Tide survey vessels within NJ and NY waters and federal waters.

The survey area will be bounded by below coordinates:

39° 51' 07.2" N, 073° 01' 28.1" W;
40° 03' 06.4" N, 074° 02' 55.3" W,
40° 30' 02.8" N, 074° 17' 35.7" W,
40° 36' 35.5" N, 074° 02' 46.7" W,
40° 38' 22.1" N, 073° 19' 15.0" W;
40° 03' 41.5" N, 072° 35' 45.9" W,
39° 53' 42.6" N, 072° 35' 15.4" W.

Sidescan sonar (SSS), multibeam bathymetry echo sounder (MBES), cesium vapor magnetometer (MAG), parametric sub-bottom profiler (SBP), single channel seismic boomer (S-UHRS) and ultrashort base line (USBL) acoustic transceiver will be used starting on April 1, 2023, until approximately September 30, 2023 and will be conducted 7 days per week during daylight hours, until survey completion with periodic port calls. Time & Tide will monitor VHF-FM Ch 16. Vessels will have restricted maneuverability during survey operations when towing equipment. Mariners, please transit the area with extreme caution and transit at slow speed to minimize wake when transiting the area. For more information, Trevor Jones may also be contacted at 1-857-972-4328.

Chart 13003 LNM 11/23

MARINER'S UPDATE

Fifth Coast Guard District:

COMPLETED- NY - NJ - SEACOAST - OFFSHORE SURVEY OPERATIONS

Fugro will be conducting geotechnical investigations from Regulus and/or Explorer within the Bluepoint Wind Lease Area (OCS-A 0537).

The survey area will be bounded by the following coordinates:

40° 03' 39.4" N, 072° 53' 32.7" W
40° 03' 19.3" N, 072° 36' 19.3" W
39° 53' 58.6" N, 072° 36' 38.9" W
39° 54' 18.6" N, 072° 53' 49.9" W

Equipment on the vessel(s) include C25 drill rig, API drill pipe, WISON geotechnical sampling equipment and P&S logging equipment. Survey operations start approximately on July 7, 2023, until approximately August 31, 2023 and will be conducted 7 days per week, 24 hours per day until survey completion with periodic port calls. Regulus and/or Explorer will monitor VHF-FM Ch 16. The vessel(s) will have restricted or no maneuverability during survey operations for extended periods of time and is requesting mariners operating in or transiting the area to give a 0.5 NM passing clearance. Mariners, please transit the area with extreme caution. For more information, Trevor Jones may also be contacted at 1-857-972-4328. Chart 13003 LNM 25/23

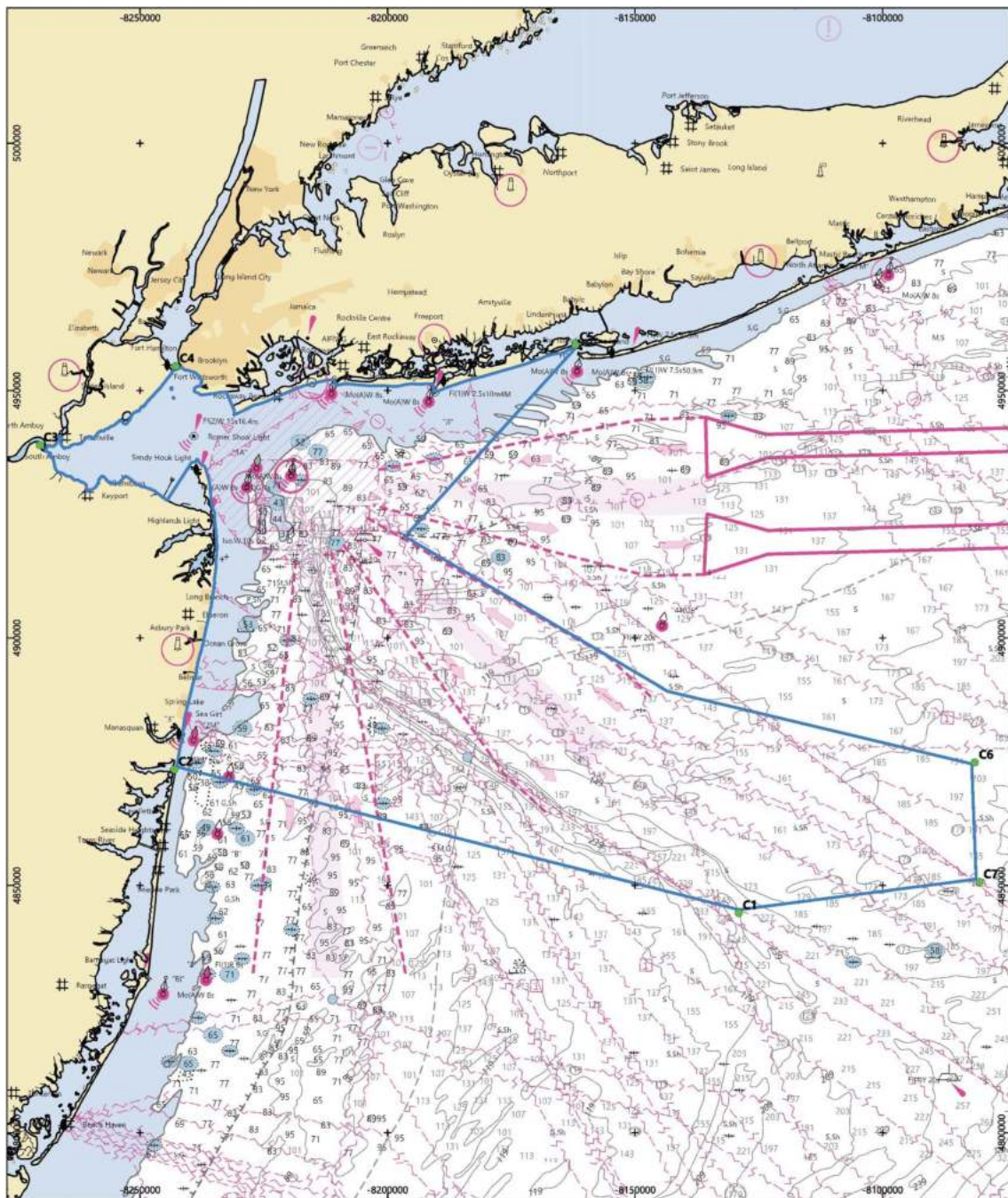
COMPLETED- NY - NJ - SEACOAST - OFFSHORE SURVEY OPERATIONS

TerraSond will be conducting geotechnical investigations from the Yeti survey vessel with support from Carta within a survey area in state nearshore waters bounded by the NY and NJ coast and the following coordinates:

40° 02' 36.7" N, 73° 58' 51.8" W
40° 03' 06.4" N, 74° 02' 55.3" W
40° 30' 02.7" N, 74° 17' 35.7" W
40° 36' 35.5" N, 74° 02' 46.7" W
40° 31' 54.1" N, 73° 39' 26.9" W
40° 21' 06.3" N, 73° 54' 22.3" W

Equipment on Yeti includes a 3m vibra-core unit, Ocean Instruments RIC 5500 CPT unit. Survey operations start approximately on August 28th, 2023, until approximately September 30th, 2023 and will be conducted 7 days per week, 12 hours per day during daylight until survey completion with periodic port calls. Both Yeti and Carta will monitor VHF-FM Ch 16. Yeti will have restricted to no maneuverability during survey operations for extended periods of time and is requesting mariners operating in or transiting the area to give a 0.5 NM passing clearance. Mariners, please transit the area with extreme caution. For more information, Trevor Jones (Vessel Operations Manager for Bluepoint Wind) may also be contacted at 1-857-972-4328.

MARINER'S UPDATE



LOCAL NOTICE TO MARINERS - BLUEPOINT WIND OFFSHORE SURVEY AREA

EPSG CODE: 32218

COORDINATE SYSTEM: UTM ZONE 18 N - NAD83

LEGEND

- Survey Area Bounding Locations
- Survey Area



Scale - 1: 700,000 at original 11" x 17" page size

Coordinate Reference - NAD83



SURVEY AREA BOUNDING COORDINATES (NAD83)		
CORNER	LATITUDE	LONGITUDE
C1	39° 51' 07.2" N	073° 01' 28.1" W
C2	40° 03' 06.4" N	074° 02' 55.3" W
C3	40° 30' 02.8" N	074° 17' 35.7" W
C4	40° 36' 35.5" N	074° 02' 46.7" W
C5	40° 38' 22.1" N	073° 19' 15.0" W
C6	40° 03' 41.5" N	072° 35' 45.9" W
C7	39° 53' 42.6" N	072° 35' 15.4" W