

2024 MARINER'S UPDATE

First Coast Guard District:

ATLANTIC OCEAN - NEW JERSEY

Alpine will be conducting geophysical investigations from the Henry Hudson survey vessel within a survey area in state waters, from approximately December 22, 2023, through approximate February 16, 2024, for 12 hours a day during daylight, 7 days a week, in the following positions: 40-30.2N, 074-16.41W; 40-34.34N, 074-34.43W; 40-30.19N, 074-0.8W; 40-25.28N, 074-3.43W Equipment on the Henry Hudson includes sidescan sonar (SSS), multibeam bathymetry echo sounder (MBES), single beam bathymetry echo sounder (SBES), gradiometer (MAG), parametric sub-bottom profiler (SBP), single-channel seismic sparker and streamer, and ultra-short base line (USBL) acoustic transceiver. Henry Hudson will have restricted maneuverability during survey operations when towing equipment and is requesting mariners transit with extreme caution and at a slow speed to minimize wake when transiting the area. Henry Hudson will be monitoring VHF-FM CH 16 for any concerned traffic. Eric Fischer (Vessel Operations Manager for Bluepoint Wind) may also be contacted at (337) 319-2662

ATLANTIC OCEAN-NEW JERSEY-Update 1/17/2024

Alpine will be conducting geotechnical investigations from the MV George with support from RV William M within a survey area of nearshore waters of New Jersey, from approximately February 1, 2024, through approximately February 19, 2024, during 12 hours of daylight, 7 days a week until survey completion. Equipment on the vessel includes a mini pneumatic 3-meter vibrocore. MV GEORGE will have restricted to no maneuverability during survey operations for extended periods of time and is requesting mariners operating in or transiting in the area to give a 0.5 NM passing clearance. Mariners, please transit the area with extreme caution. MV GEORGE AND RV WILLIAM M will be monitoring VHF-FM CH 16 for any traffic concerns. Eric Fischer (Vessel Operations Manager for Bluepoint Wind) may also be contacted at (337) 319-2662

2024 MARINER'S UPDATE

Fifth Coast Guard District:

******NY – NJ – RARITAN BAY – SURVEY OPERATIONS******

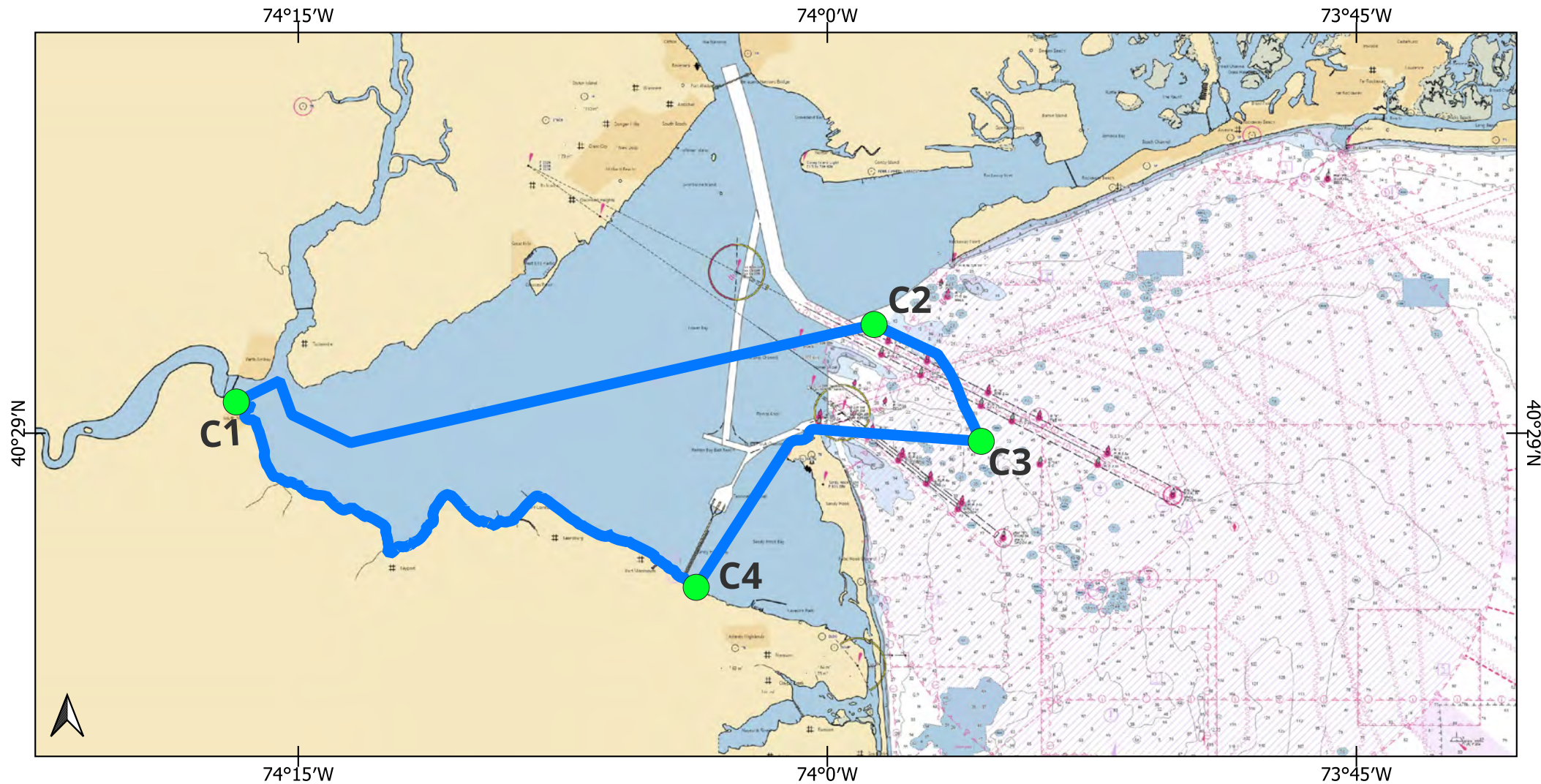
Alpine will be conducting geophysical investigations from the Henry Hudson survey vessel within a survey area in state waters, from approximately December 22, 2023, through approximately February 16, 2024, for 12 hours a day during daylight, 7 days a week. Equipment on the Henry Hudson includes sidescan sonar (SSS), multibeam bathymetry echo sounder (MBES), single beam bathymetry echo sounder (SBES), gradiometer (MAG), parametric subbottom profiler (SBP), single-channel seismic sparker and streamer, and ultra-short base line (USBL) acoustic transceiver. Henry Hudson will have restricted maneuverability during survey operations when towing equipment and is requesting mariners transit with extreme caution and at a slow speed to minimize wake when transiting the area. Henry Hudson will be monitoring VHF-FM CH 16 for any concerned traffic. Eric Fischer (Vessel Operations Manager for Bluepoint Wind) may also be contacted at (337) 319-2662.

The survey will be conducted in nearshore waters within the following bounding coordinates:
40° 30' 2" N, 74° 16' 41" W; 40° 34' 34" N, 74° 34' 43" W 40° 30' 19" N, 74° 0' 8" W; 40° 25' 28" N, 74° 3' 43" W.

NY – NJ – RARITAN BAY – SURVEY OPERATIONS

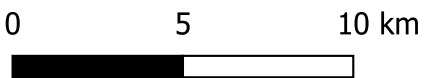
Alpine will be conducting geotechnical investigations from the MV George with support from RV William M within a survey area of nearshore waters of New Jersey, from approximately February 1, 2024 through approximately February 19, 2024, during 12 hours of daylight, 7 days a week until survey completion. Equipment on the vessel includes a mini pneumatic 3-meter vibrocore. MV George will have restricted to no maneuverability during survey operations for extended periods of time and is requesting mariners operating in or transiting in the area to give a 0.5 NM passing clearance. Mariners, please transit the area with extreme caution. MV George and RV William M will be monitoring VHF-FM CH 16 for any traffic concerns. Eric Fischer (Vessel Operations Manager for Bluepoint Wind) may also be contacted at (337) 319-2662.

The survey will be conducted in nearshore waters within the following bounding coordinates:
40° 30' 2" N, 74° 16' 41" W; 40° 34' 34" N, 74° 34' 43" W 40° 30' 19" N, 74° 0' 8" W; 40° 25' 28" N, 74° 3' 43" W.





Bluepoint Wind Offshore Survey Area

Survey Area Bounding Coordinates



Corner	Latitude	Longitude
C1	40° 29' 28" N	74° 16' 45" W
C2	40° 31' 8" N	73° 58' 40" W
C3	40° 28' 38" N	73° 55' 38" W
C4	40° 25' 29" N	74° 3' 43" W

Legend

-  Survey Area
-  Survey Area Bounding

Locations



Project Name	Bluepoint Wind
BPW Document Number	USBPW-BPW-Geo-PET-MAP-00002
	UNM Harlan Bay
Revision	001
Document Date	12/8/2023
Created By	Rob Gardiner

Coordinate System: EPSG 3857
 Basemap: NOAA Marine Services Chart /
 ESRI Topo
 Scale 1:275000