

MARINER'S UPDATE

First Coast Guard District:

ATLANTIC OCEAN - WIND LEASE AREA OCS-A 0537

TerraSond will be conducting geophysical survey activities within offshore waters including Lease Area OCS-A-0537 and nearshore waters of NY and NJ, from March 1 through September 30, 2023, 24 hours a day, seven days a week. Equipment on scene will be the GO Adventurer survey vessel, utilizing sidescan sonar (SSS), multibeam bathymetry echo sounder (MBES), cesium vapor magnetometer (MAG), parametric sub-bottom profiler (SBP) and ultrashort base line (USBL) acoustic transceiver. GO Adventurer will have restricted maneuverability during survey operations when towing equipment. Mariners, please transit the area with extreme caution and transit at slow speed to minimize wake when transiting the area. GO Adventurer will be monitoring VHF-FM CH 16 for any concerned traffic. Trevor Jones (Vessel Operations Manager for Bluepoint Wind) may also be contacted at 1-857-972-4328. LNM 07/23

ATLANTIC OCEAN -NY-NJ COAST

Bluepoint Wind will be conducting geophysical survey activities from the GERRY BORDELON survey vessel within an offshore and nearshore survey area, between lease area OCS-A 0537 and nearshore waters of New Jersey and New York, from April 4 to June 30, 2023, the GERRY BORDELON will operate 24 hours a day, seven days a week. Equipment on scene will be monitoring VHF-FM CH 16 and will be operating with Sidescan sonar (SSS), multibeam bathymetry echo sounder (MBES), cesium vapor magnetometer (MAG), parametric sub-bottom profiler (SBP), single channel seismic boomer (S-UHRS) and ultra-short base line (USBL) acoustic transceiver. Vessels will have restricted maneuverability during survey operations when towing equipment. Mariners, please transit the area with extreme caution and transit at slow speed to minimize wake when transiting the area. LNM 11/23

ATLANTIC OCEAN -NY-NJ COAST

Bluepoint Wind will be conducting geophysical survey activities from the TIME & TIDE survey vessel within an offshore and nearshore survey area, between lease area OCS-A 0537 and nearshore waters of New Jersey and New York, from April 1 to September 30, 2023, the TIME & TIDE will operate during daylight hours, only. Equipment on scene will be monitoring VHF-FM CH 16 and will be operating with Sidescan sonar (SSS), multibeam bathymetry echo sounder (MBES), cesium vapor magnetometer (MAG), parametric sub-bottom profiler (SBP), single channel seismic boomer (SUHRS) and ultra-short base line (USBL) acoustic transceiver. Vessels will have restricted maneuverability during survey operations when towing equipment. Mariners, please transit the area with extreme caution and transit at slow speed to minimize wake when transiting the area. LNM 11/23

ATLANTIC OCEAN -NY-NJ COAST

Northstar Marine will be conducting benthic survey activities within a survey area in state and offshore waters, between lease area OCS-A 0537 and nearshore waters of New Jersey and New York, from June 1 to June 30, 2023, 24 hours a day, seven days a week. Equipment on scene will be from the Atlantic Surveyor vessel monitoring VHF-FM CH 16 and will be operating with SPI camera system and towed video sled. The vessel will have restricted maneuverability during survey operations when towing equipment. Mariners, please transit the area with caution and transit at slow speed to minimize wake when transiting the area. Chart 13303. LNM 20/23.

MARINER'S UPDATE

Fifth Coast Guard District:

NY – NJ – SEACOAST – OFFSHORE SURVEY OPERATIONS

TerraSond will be conducting geophysical survey activities from the GO Adventurer survey vessel within the Bluepoint Wind Lease Area (OCS-A 0537).

The survey area will be bounded by below coordinates:

39° 51' 07.2" N, 073° 01' 28.1" W;
40° 03' 06.4" N, 074° 02' 55.3" W,
40° 30' 02.8" N, 074° 17' 35.7" W,
40° 36' 35.5" N, 074° 02' 46.7" W,
40° 38' 22.1" N, 073° 19' 15.0" W;
40° 03' 41.5" N, 072° 35' 45.9" W,
39° 53' 42.6" N, 072° 35' 15.4" W.

Sidescan sonar (SSS), multibeam bathymetry echo sounder (MBES), cesium vapor magnetometer (MAG), parametric sub-bottom profiler (SBP), and ultrashort base line (USBL) acoustic transceiver will be used starting on March 1, 2023, until approximately September 30, 2023 and will be conducted 7 days per week, 24 hours per day until survey completion with periodic port calls. GO Adventurer will monitor VHF-FM Ch 16. For more information, Trevor Jones may also be contacted at 1-857-972-4328.

Chart 13003 LNM 07/23

NY – NJ – SEACOAST – OFFSHORE SURVEY OPERATIONS

TerraSond will be conducting geophysical survey activities from the Gerry Bordelon survey vessels within the Bluepoint Wind Lease Area (OCS-A 0537).

The survey area will be bounded by below coordinates:

39° 51' 07.2" N, 073° 01' 28.1" W;
40° 03' 06.4" N, 074° 02' 55.3" W,
40° 30' 02.8" N, 074° 17' 35.7" W,
40° 36' 35.5" N, 074° 02' 46.7" W,
40° 38' 22.1" N, 073° 19' 15.0" W;
40° 03' 41.5" N, 072° 35' 45.9" W,
39° 53' 42.6" N, 072° 35' 15.4" W.

Sidescan sonar (SSS), multibeam bathymetry echo sounder (MBES), cesium vapor magnetometer (MAG), parametric sub-bottom profiler (SBP), and ultrashort base line (USBL) acoustic transceiver will be used starting on April 4, 2023, until approximately September 30, 2023 and will be conducted 7 days per week, 24 hours per day for Gerry Bordelon, until survey completion with periodic port calls. Gerry Bordelon and Time & Tide will monitor VHF-FM Ch 16. Vessels will have restricted maneuverability during survey operations when towing equipment. Mariners, please transit the area with extreme caution and transit at slow speed to minimize wake when transiting the area. For more information, Trevor Jones may also be contacted at 1-857-972-4328.

Chart 13003 LNM 11/23

MARINER'S UPDATE

Fifth Coast Guard District:

NY – NJ – SEACOAST – OFFSHORE SURVEY OPERATIONS

TerraSond will be conducting geophysical survey activities from the Time & Tide survey vessels within the Bluepoint Wind Lease Area (OCS-A 0537).

The survey area will be bounded by below coordinates:

39° 51' 07.2" N, 073° 01' 28.1" W;
40° 03' 06.4" N, 074° 02' 55.3" W,
40° 30' 02.8" N, 074° 17' 35.7" W,
40° 36' 35.5" N, 074° 02' 46.7" W,
40° 38' 22.1" N, 073° 19' 15.0" W;
40° 03' 41.5" N, 072° 35' 45.9" W,
39° 53' 42.6" N, 072° 35' 15.4" W.

Sidescan sonar (SSS), multibeam bathymetry echo sounder (MBES), cesium vapor magnetometer (MAG), parametric sub-bottom profiler (SBP), and ultrashort base line (USBL) acoustic transceiver will be used starting on April 1, 2023, until approximately September 30, 2023 and will be conducted 7 days per week during daylight hours, until survey completion with periodic port calls. Time & Tide will monitor VHF-FM Ch 16. Vessels will have restricted maneuverability during survey operations when towing equipment. Mariners, please transit the area with extreme caution and transit at slow speed to minimize wake when transiting the area. For more information, Trevor Jones may also be contacted at 1-857-972-4328.

Chart 13003 LNM 11/23

NY – NJ – SEACOAST – OFFSHORE SURVEY OPERATIONS

Bluepoint Wind will be conducting benthic survey activities from the Atlantic Surveyor survey vessel within a survey area in state and offshore waters, including the Bluepoint Wind lease area OCS-A 0537.

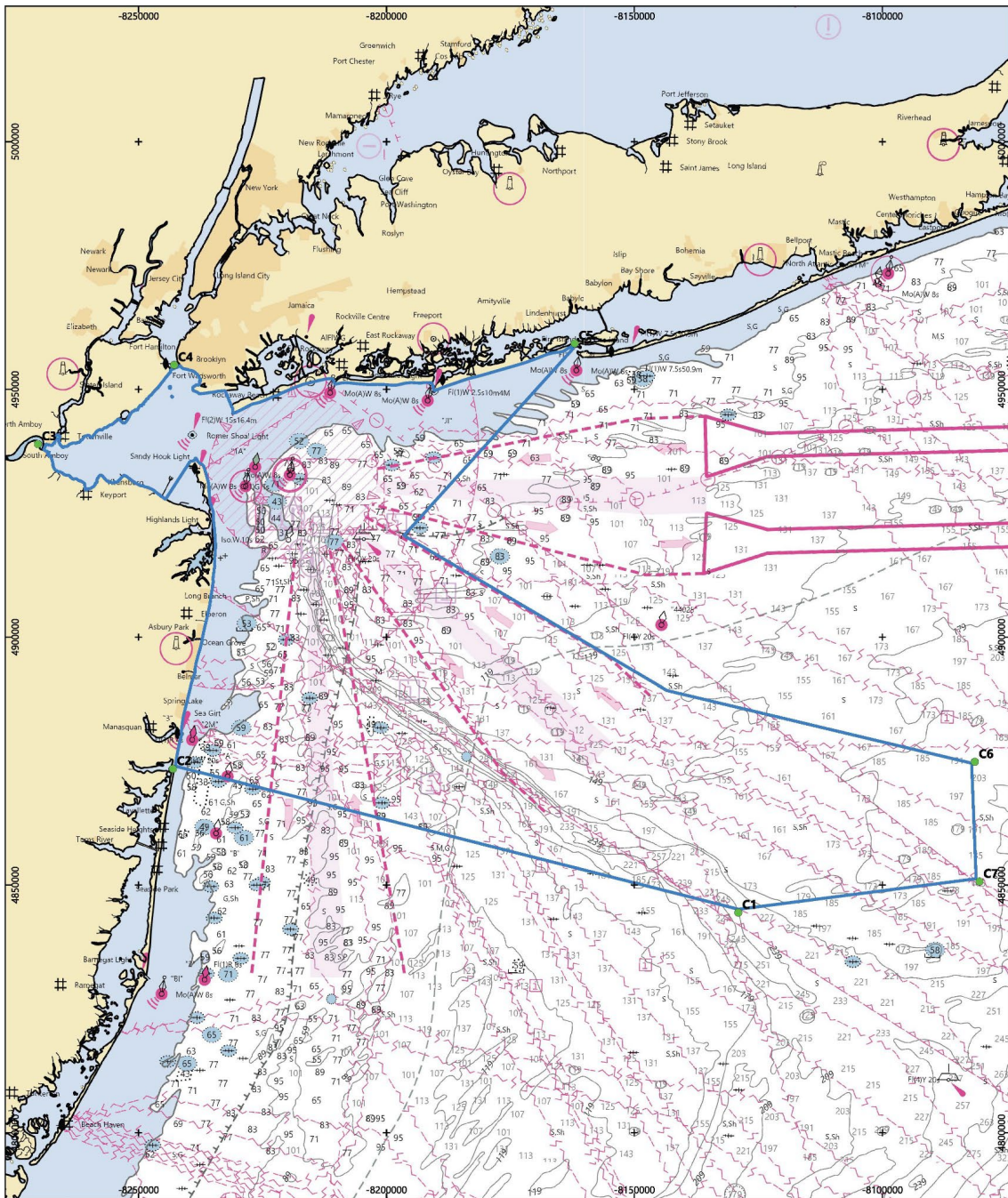
The survey area will be bounded by below coordinates:

39° 51' 07.2" N, 073° 01' 28.1" W;
40° 03' 06.4" N, 074° 02' 55.3" W,
40° 30' 02.8" N, 074° 17' 35.7" W,
40° 36' 35.5" N, 074° 02' 46.7" W,
40° 38' 22.1" N, 073° 19' 15.0" W;
40° 03' 41.5" N, 072° 35' 45.9" W,
39° 53' 42.6" N, 072° 35' 15.4" W.

SPI camera system and towed video sled will be used starting on June 1, 2023 through June 30, 2023 and will be conducted 7 days per week, 24 hours per day, until survey completion with periodic port calls. Atlantic Surveyor will monitor VHF-FM Ch 16. Vessels will have restricted maneuverability during survey operations when towing equipment. Mariners, please transit the area with extreme caution and transit at slow speed to minimize wake when transiting the area. For more information, Trevor Jones may also be contacted at 1-857-972-4328.

Chart 13003 LNM 20/23

MARINER'S UPDATE



LOCAL NOTICE TO MARINERS - BLUEPOINT WIND OFFSHORE SURVEY AREA

EPSG CODE: 32218

COORDINATE SYSTEM: UTM ZONE 18 N - NAD83

LEGEND

- Survey Area Bounding Locations
- Survey Area



Scale - 1: 700,000 at original 11" x 17" page size

Coordinate Reference - NAD83



SURVEY AREA BOUNDING COORDINATES (NAD83)		
CORNER	LATITUDE	LONGITUDE
C1	39° 51' 07.2" N	073° 01' 28.1" W
C2	40° 03' 06.4" N	074° 02' 55.3" W
C3	40° 30' 02.8" N	074° 17' 35.7" W
C4	40° 36' 35.5" N	074° 02' 46.7" W
C5	40° 38' 22.1" N	073° 19' 15.0" W
C6	40° 03' 41.5" N	072° 35' 45.9" W
C7	39° 53' 42.6" N	072° 35' 15.4" W